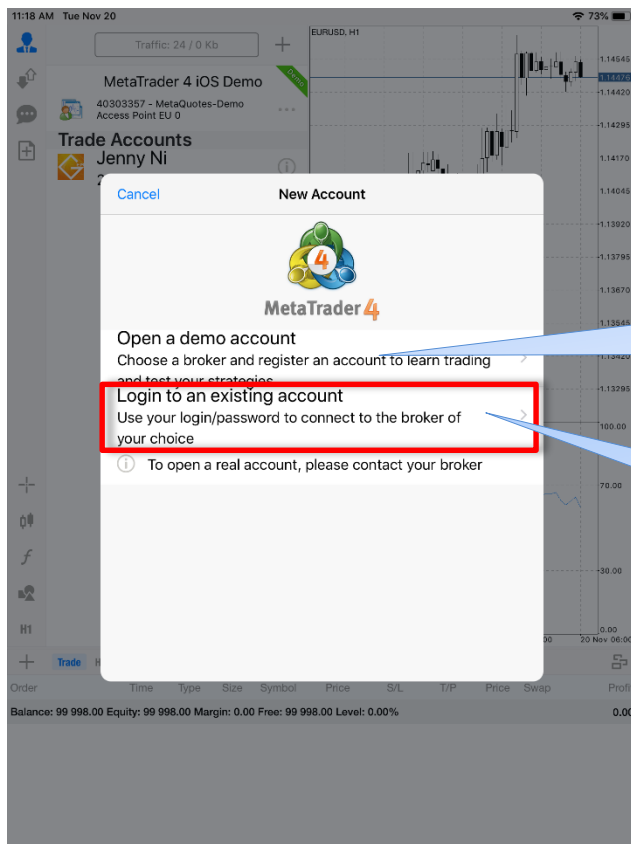




# MT4 Login Manual

## Ipad version

1. Start MT4 and select the [login to an existing account].



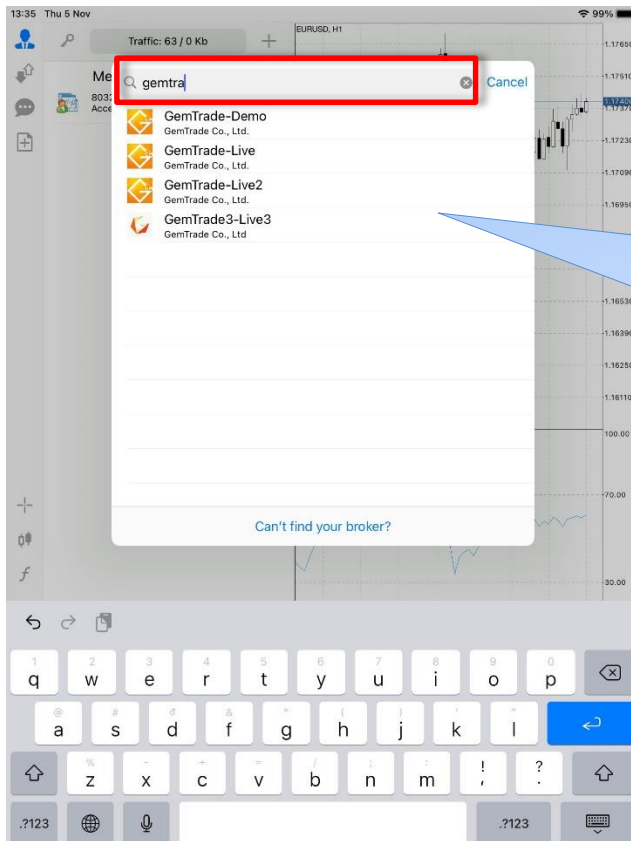
First, please download the “MetaTrader4”

Open the individual account.  
Select one from the security companies, and register the account.

Please tap the “login to an existing account”.



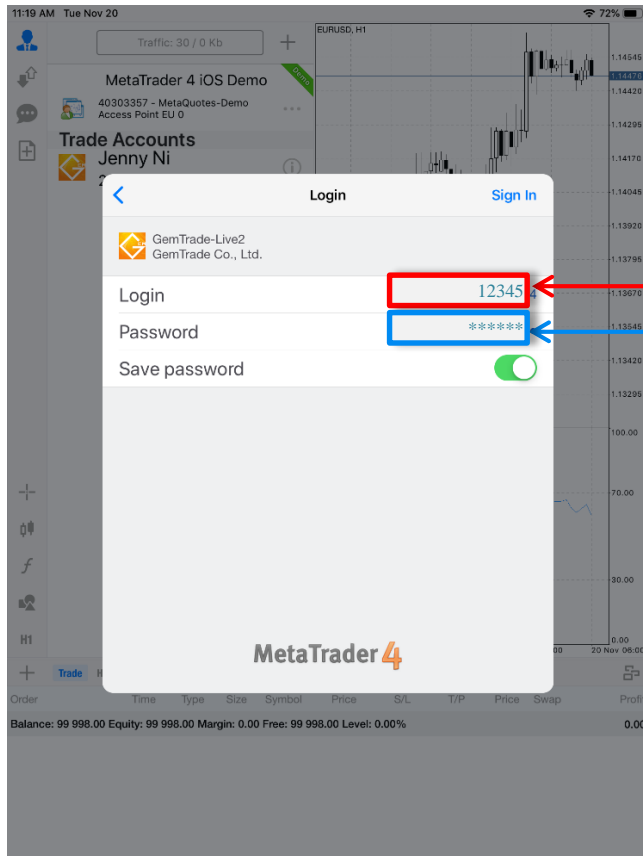
2. Please enter the name of server.



When you enter the GemTrade, since the GemTrade-Demo and GemTrade-Live, GemTrade-Live2, GemTrade3-Live3 will be displayed, please select.

※ The GemTrade-Demo is for the Demo account.

### 3. Please enter the login ID and Password.



Account Number  
12345

Password  
\*\*\*\*\*

Server  
GemForex-Live2

\*If you choose from the pull-down, please use this.

mt4dc021.gemforex.com:443

\*If you entered directly, please use this.

Password (ReadOnly)  
\*\*\*\*\*

Since the **account number** and **password** will be described in the account opening completion mail, please input them.

In the Read Only password, please take note that new order in the **Read only password** is not possible.

Login is complete when the quotation screen below appears.

If you tap the mode button, you can switch the mode. You can confirm detailed information from detail mode.



※If the screen above was not displayed, and in case of (irregular account), please try to reconfirm the information described in the account opening complete mail and try again.

For more information, please contact us at : [en@gemforex.com](mailto:en@gemforex.com)