

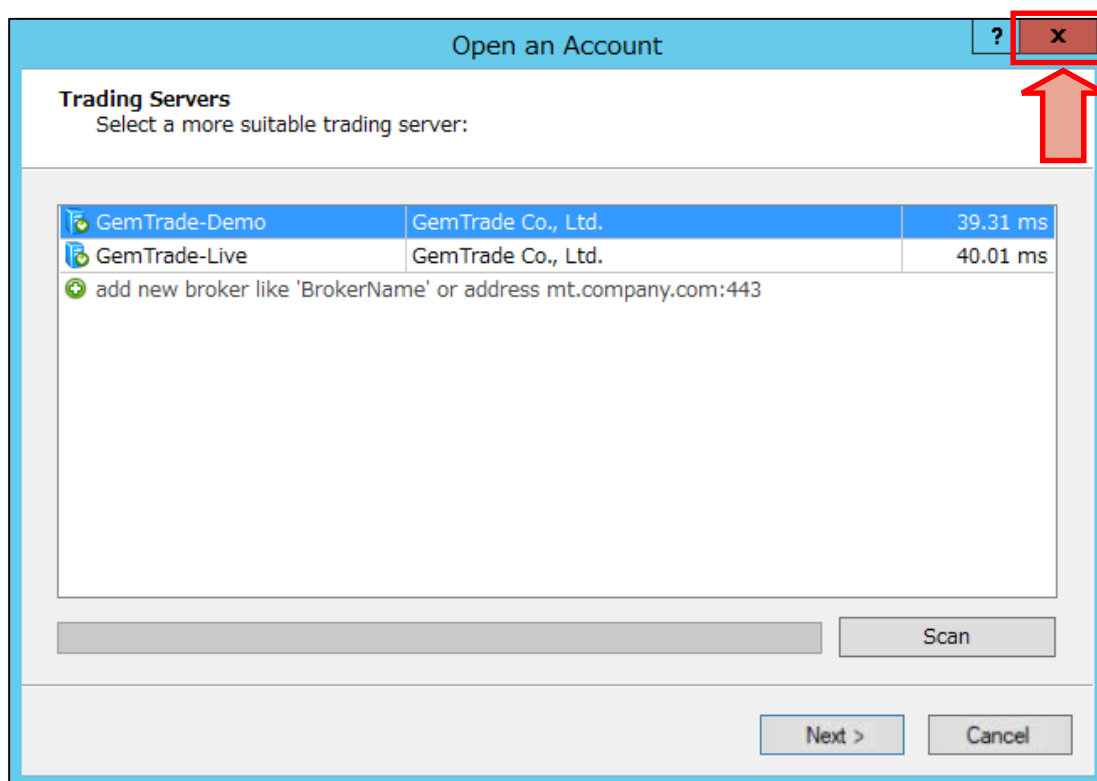


MT4 Login Manual

【MT4 Log-in Method】



① In case you have created a shortcut to the desktop, double click that and run it.



② If this is your first time to log-in, a screen like the one above will appear, close it once.

In the next section, since it will be the input of the log-in information,

You can open the window from the upper part menu 「File」 → 「Log-in to Trade account」 of the MT4.

GemFX MT4

Authorization allows to get access to the trade account

Login: 12345

Password: ●●●●●●●●

Server: GemTrade-Live

Save account information

Login Cancel

③ This will be the input screen of the log-in information.

* For real accounts, please select the server item, 「GemTrade-Live」 or 「GemTrade-Live2」 .

GemFX MT4

Authorization allows to get access to the trade account

Login: 12345

Password: ●●●●●●●●

Server: GemTrade-Demo

Save account information

Login Cancel

* For Demo Accounts, please select the server item 「GemTrade-Demo」 .

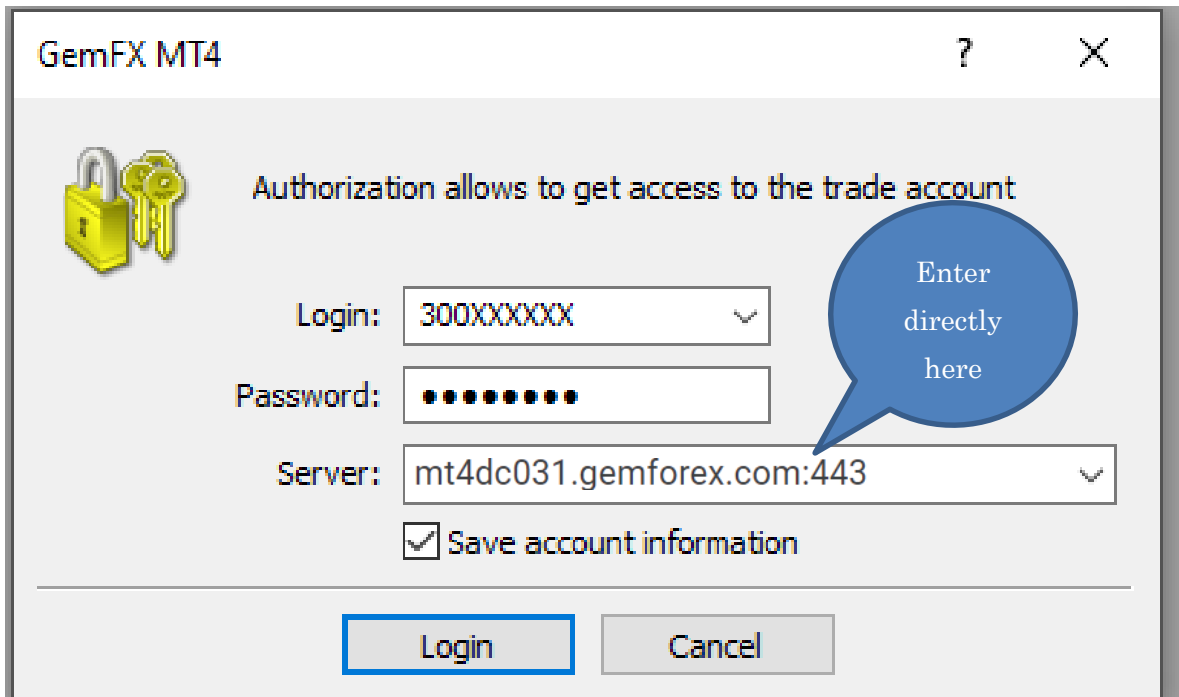
Please get ready, we will guide you to the subject 「Account opening completion guide」 , enter the log-in ID (MT4 account Number) and password. (Copy and paste is allowed)

*** For real accounts starting with number 300 and 500**

When you login MT4 for the first time, please enter the Server name below directly, instead of selecting server from the pull-down menu.

Accounts starting with number 300 **mt4dc031.gemforex.com:443**

Accounts starting with number 500 **mt4dc041.gemforex.com:443**



GemFX MT4

Authorization allows to get access to the trade account

Login: 300XXXXXX

Password: ●●●●●●●●

Server: mt4dc031.gemforex.com:443

Save account information

Login Cancel

From the second time you login, the server: [GemTrade3-Live3] and [GemTrade-Live4] will be displayed in the pull-down menu so you can select this server from menu.

【 About the type of password 】

- Password: (In My page, the initial PWD)

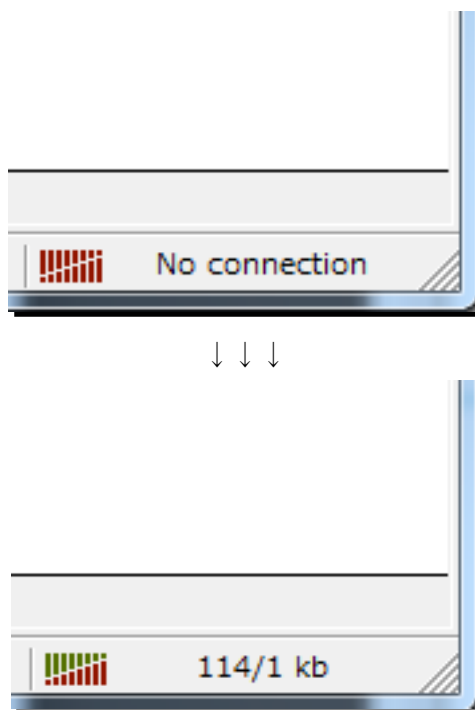
This will be needed if you have to log-in to MT4.

If you log-in with this password, all the functions such as ordering will be ready for use.

- Password (Read only): (In My page, the initial PWR(r))

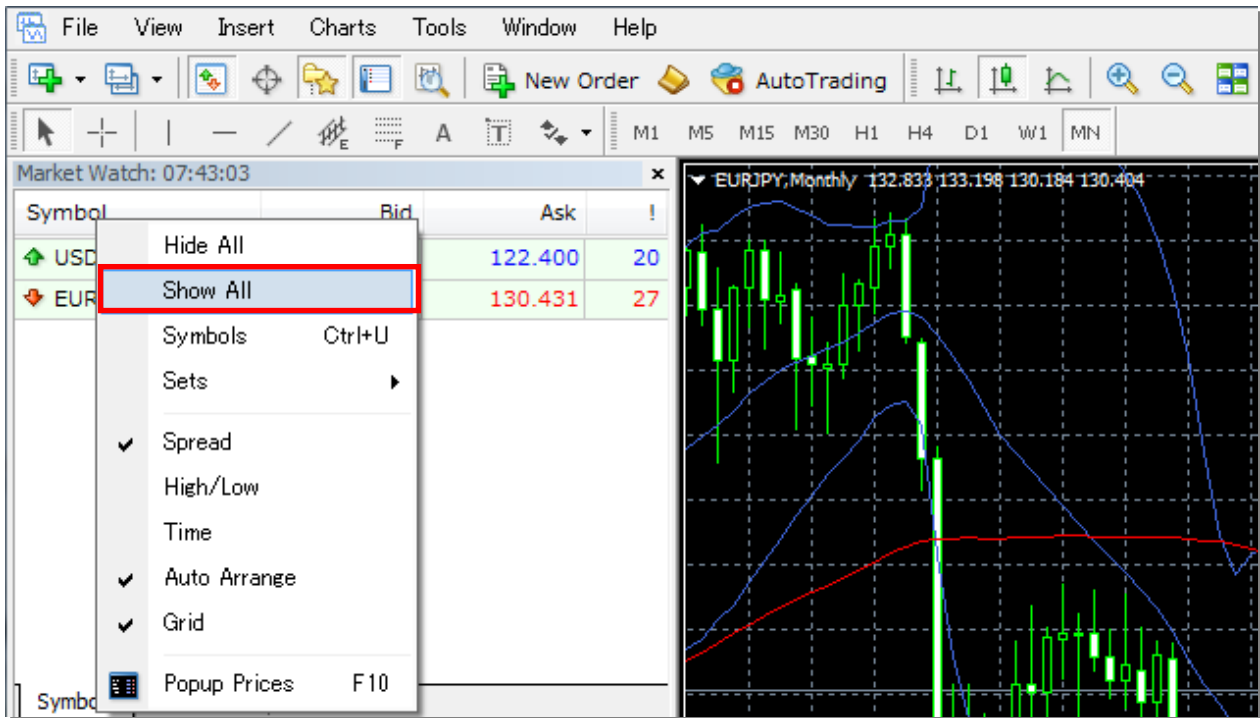
If you are going to log-in with this password, you will not be able to place an order, you will only be logged-in to the viewable condition. Although there has not been a case that this is being used normally, please use this if you want to disclose an account to a third party.

Once you have confirmed that there is no mistake in the input information, then lastly, click the "Login" button



As the display in the lower right of the MT4 changes, it becomes a successful login completion state.

●Points to take note of after the Log-in.



When the desired currency pair was not displayed, if it is a currency pair that is being handled by our company, please right click the top of the quote display window, just like the image above, it will be displayed in the 「display all the currency pair」 .

If you have any other questions, please contact us anytime.

Inquiry Email: en@gemforex.com