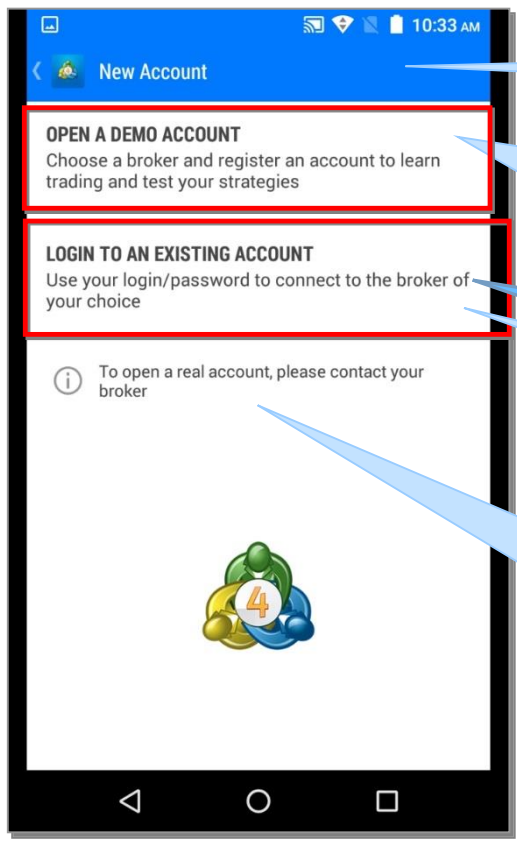




MT4 Login Manual

Android version

1. Start MT4 and select the [login to an existing account].



The screenshot shows the 'New Account' screen in the MT4 mobile app. It features two main options: 'OPEN A DEMO ACCOUNT' and 'LOGIN TO AN EXISTING ACCOUNT'. Below these is a note: 'To open a real account, please contact your broker'. A MetaTrader 4 logo is at the bottom.

First, please download the "MetaTrader4"

Start without logging in

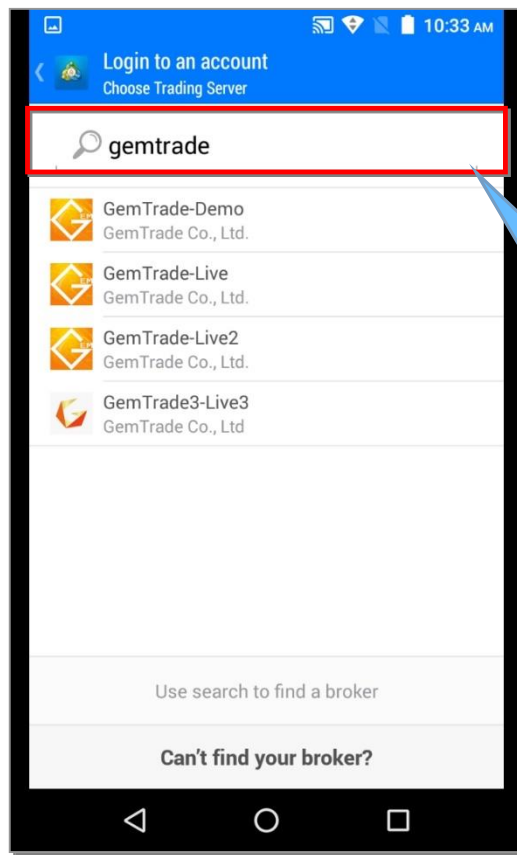
Open the individual demo account
Select one from the security companies, and register the account.

Tap the [Login to an existing account]

Login to an existing account
Search from the selected security company,

Please contact the security company if you want to open a real account.

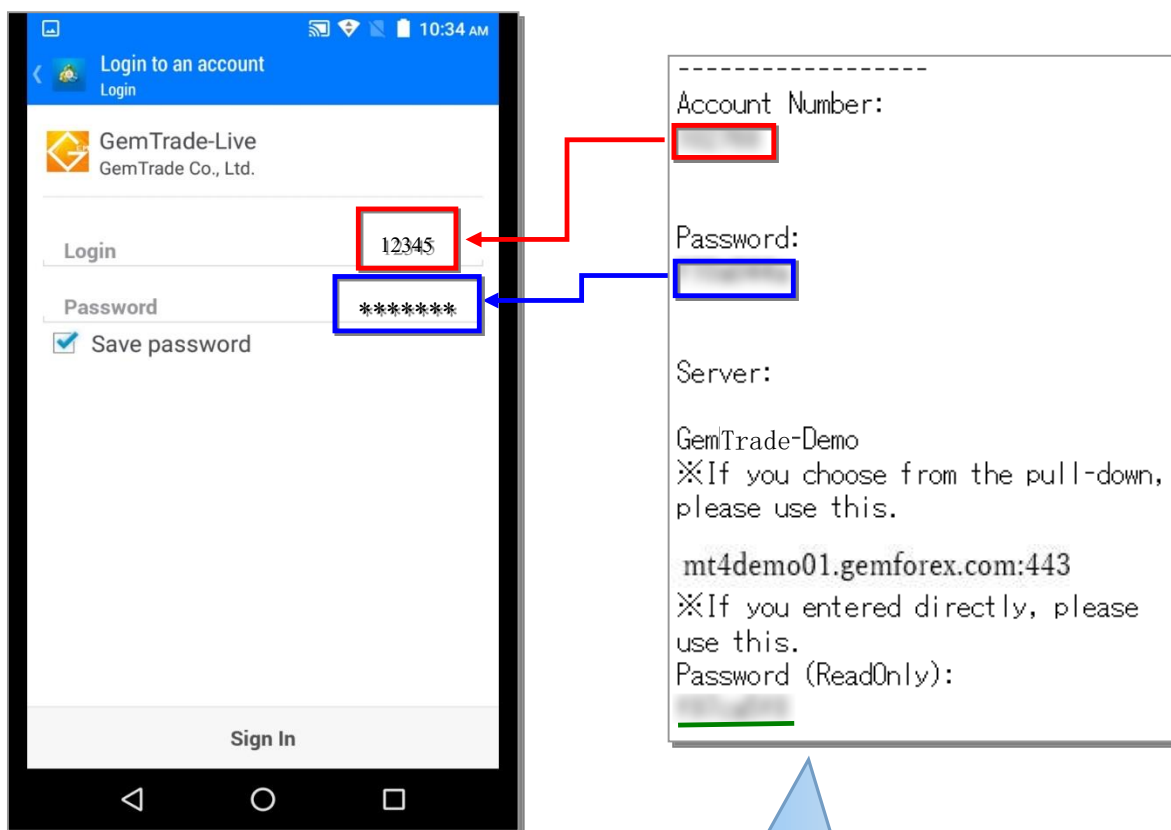
2. Please enter the name of server.



The screenshot shows the 'Login to an account' screen. A search bar at the top contains the text 'gemtrade'. Below the search bar, a list of servers is displayed: GemTrade-Demo, GemTrade-Live, GemTrade-Live2, and GemTrade3-Live3. At the bottom, there are links for 'Use search to find a broker' and 'Can't find your broker?'.

When you enter the GemTrade, since the GemTrade-Demo and GemTrade-Live, GemTrade-Live2, GemTrade3-Live3 will be displayed, please select.
※The GemTrade-Demo is for the Demo account

3. Please enter the login ID and Password.

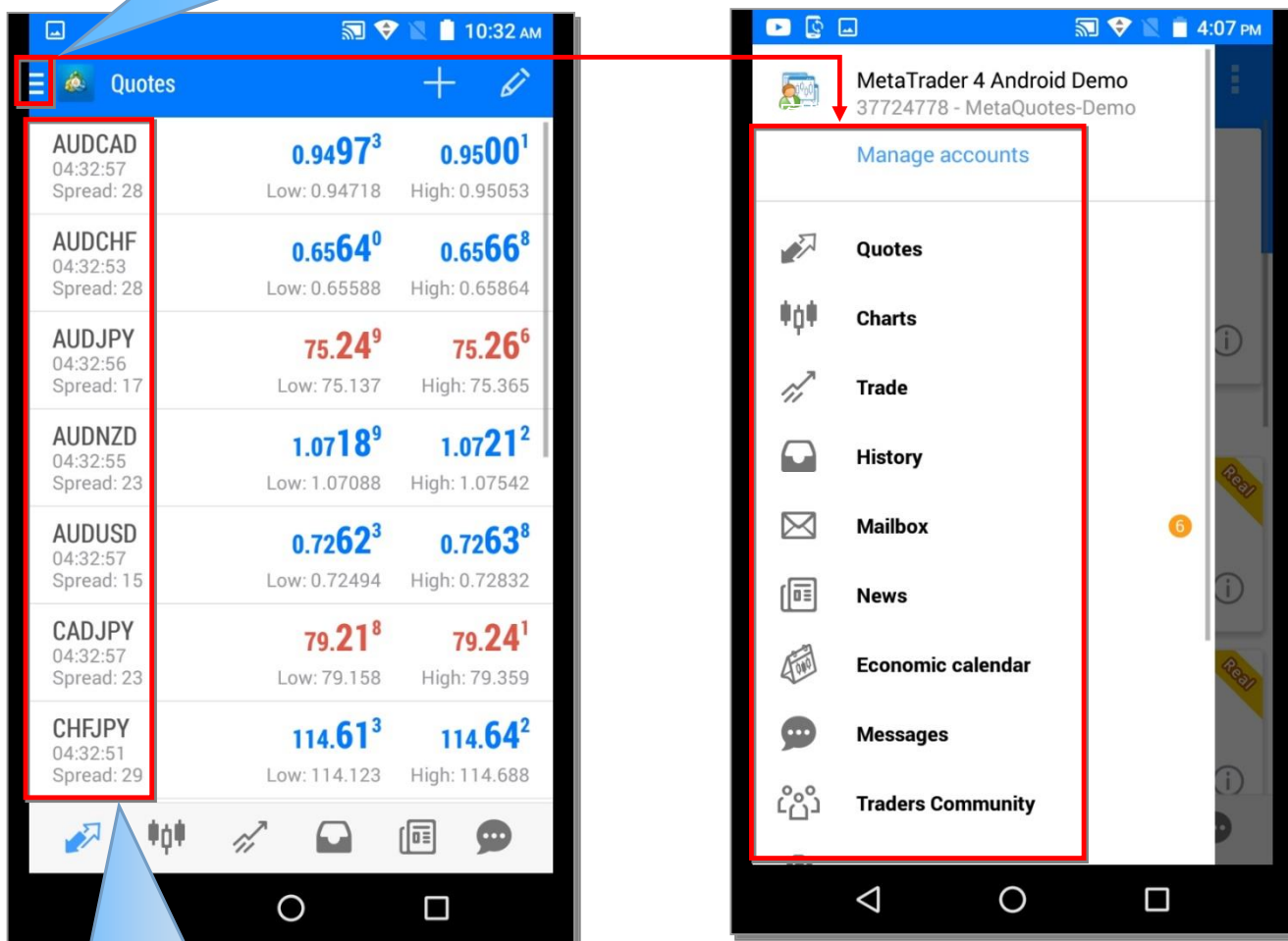


Since the **account number** and **password** will be described in the account opening completion mail, please input them.

In the **Read Only password**, please take note that new order in the Read only password is not possible.

Login is complete when the quotation screen below appears.

If you tap the button list on the left side of the quotation, the menu list will be displayed.



Name of currency pair

※If the screen above was not displayed,
and in case of (irregular account),
please try to reconfirm the information described in the
account opening complete mail and try again.

For more information, please contact us at: en@gemforex.com