



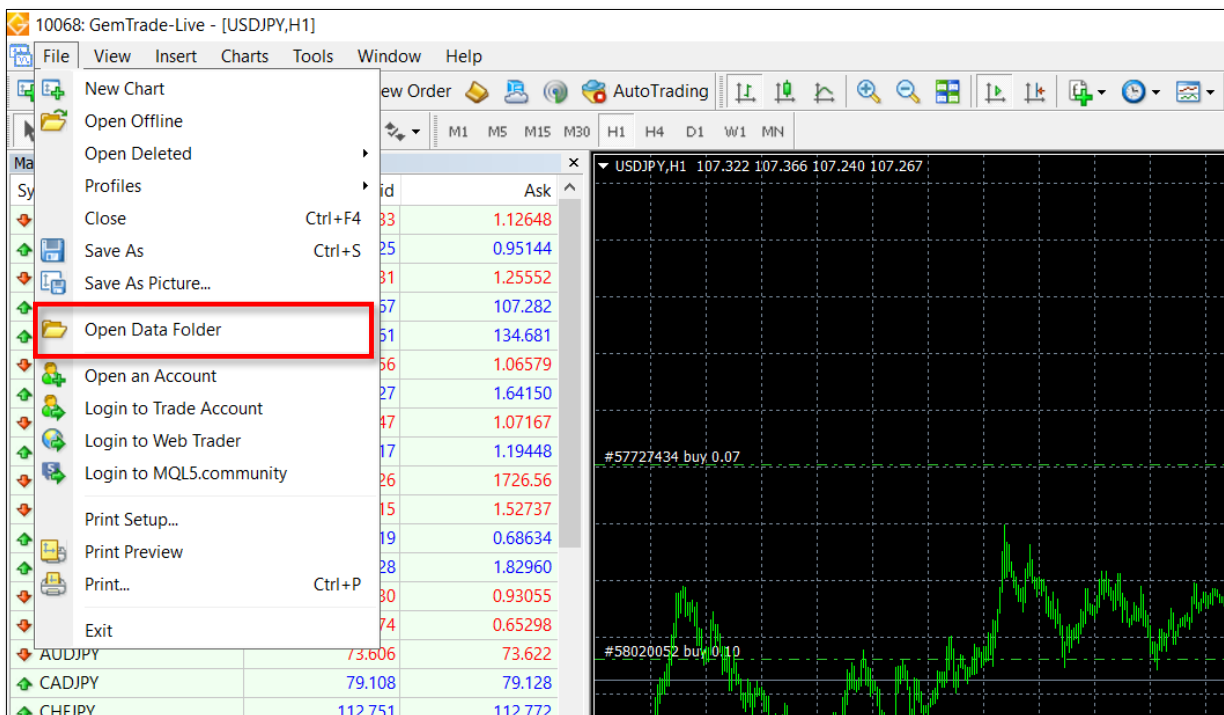
How to use EA on MT4

- **Install an EA on MT4**

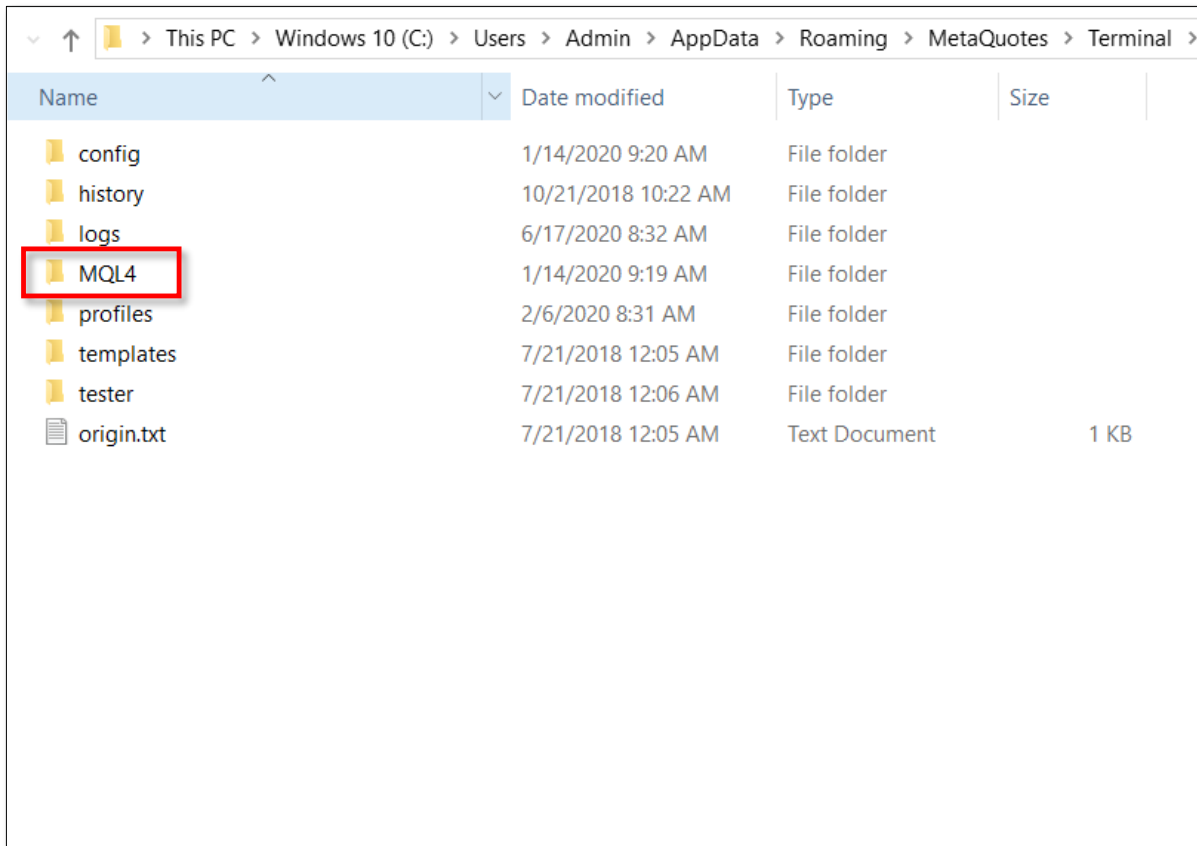
We will guide how to install EA after downloading.

① Start the MT4.

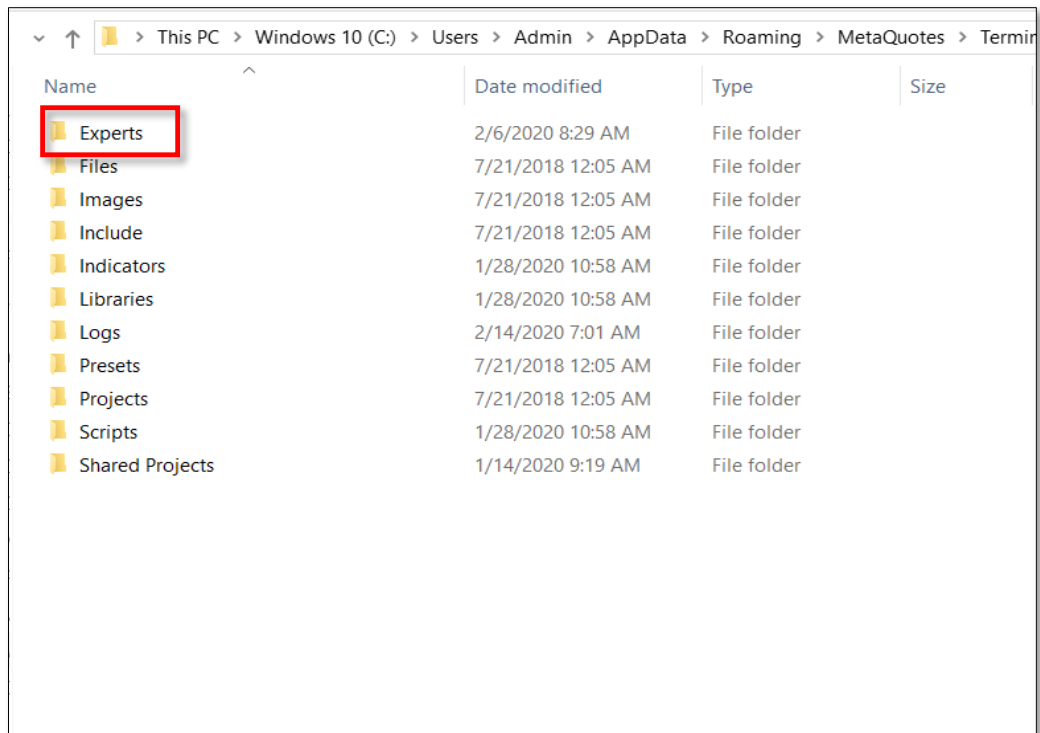
② Click [File] from the menu at the top, then select [Open Data Folder] from the displayed items.



③ A window will be opened, double-click the [MQL4] folder.

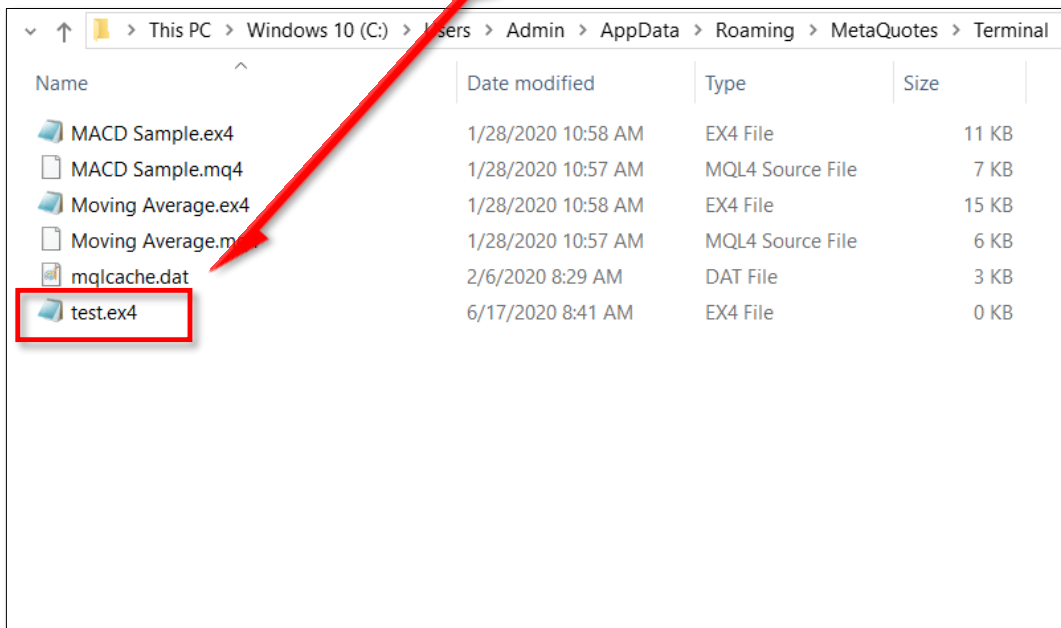


④ Double-click the [Experts] folder.



⑤ Copy-paste or drag-drop the EA that is downloaded here.

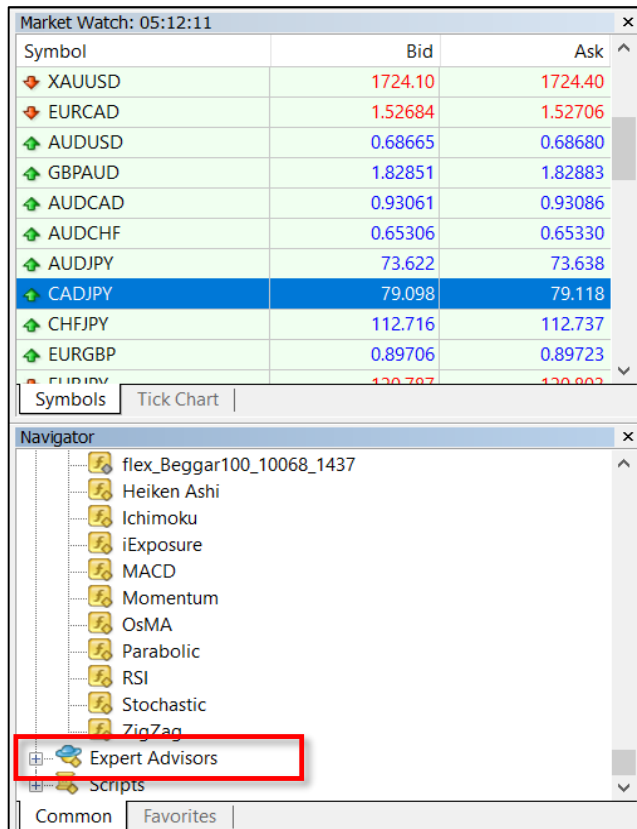
Place the file * Note that the [test] file as image below is a pseudonym.



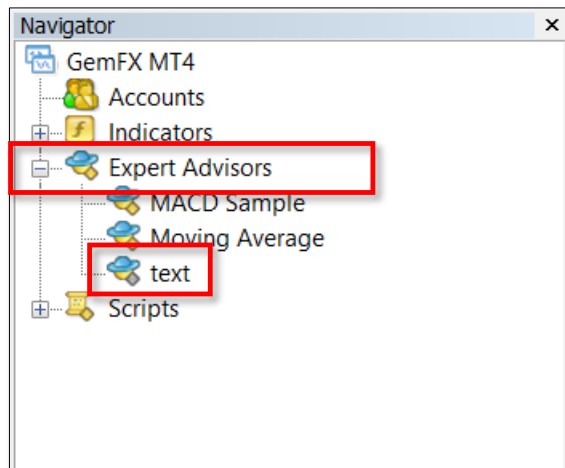
⑥ Close the MT4 and restart it.



Start the MT4 by double-click the shortcut displayed on desktop.

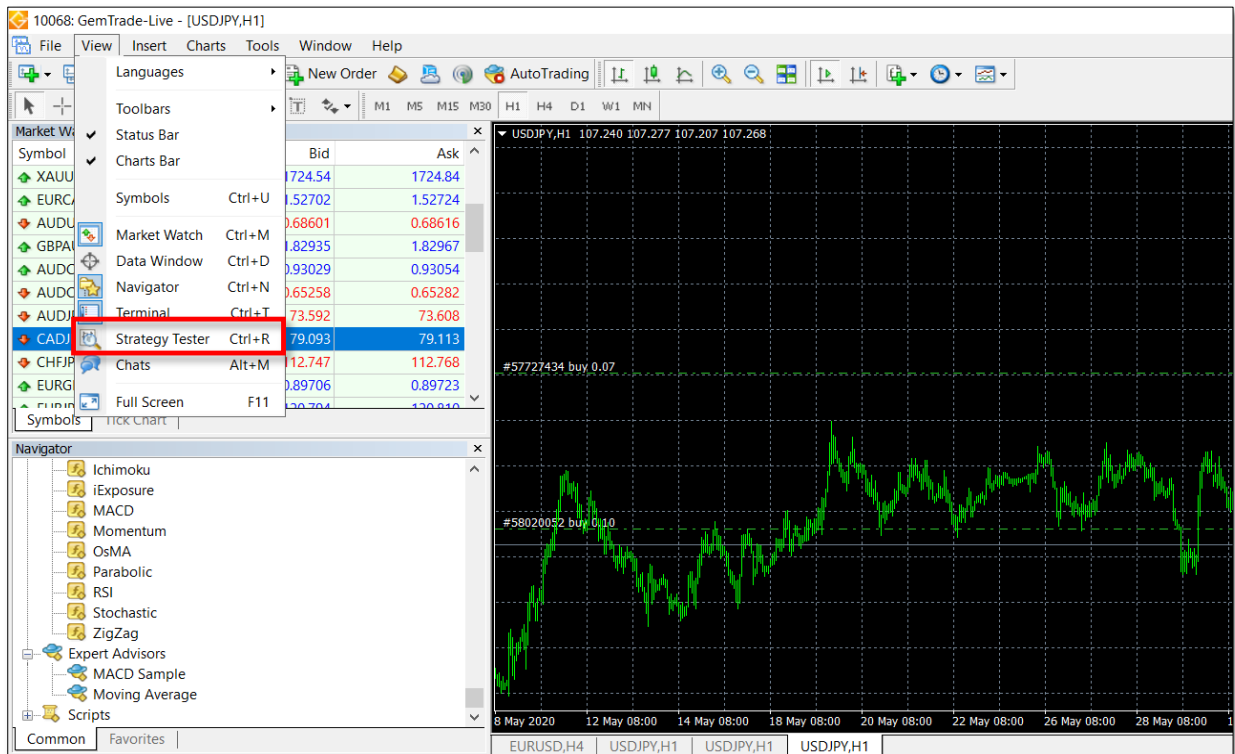


Double-click the [Expert Advisors] in the Navigator window. Normally, the Navigator window above is on the left side when the MT4 is opened.



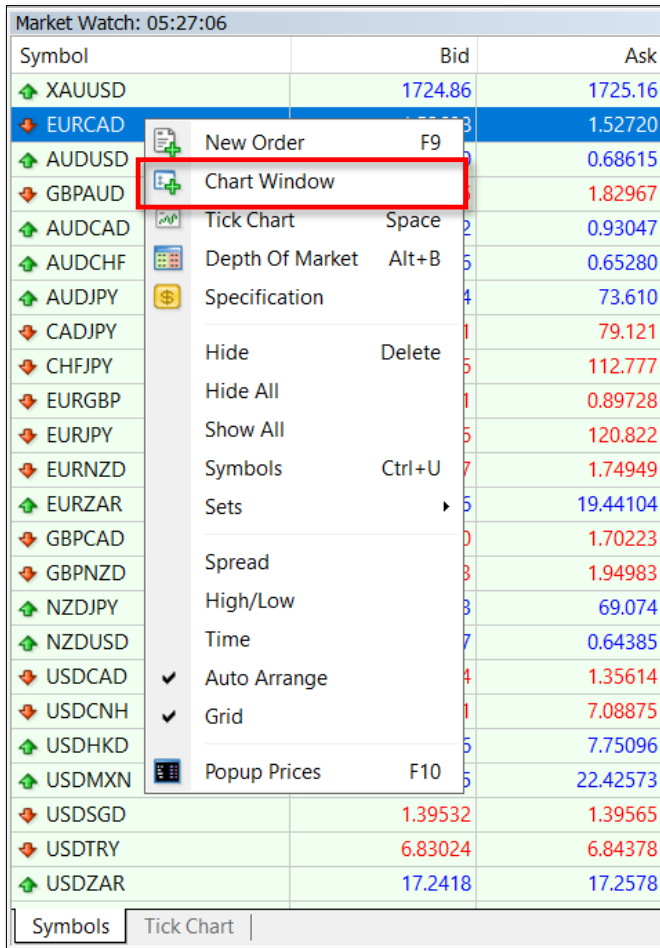
If it is displayed as the image above, it has been applied successfully and ready for use.

If the Navigator window is not displayed,
Click [View] from the menu at the top of MT4, then select [Navigator] from
the displayed items.



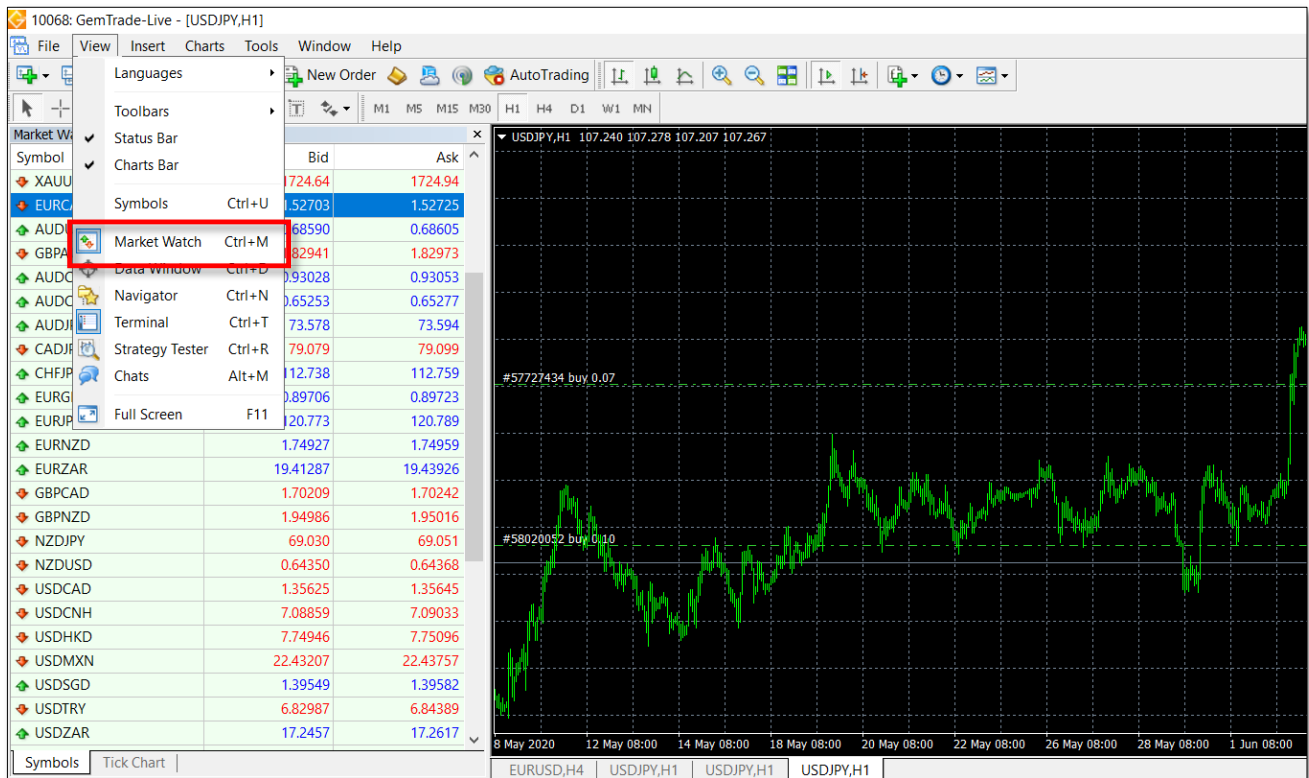
- **Set up EA on MT4**

① Open the chart.



Click on the currency pair that you want to open the chart, then right-click and select [Chart Window] from the displayed items.

If the Market Watch window is not displayed,

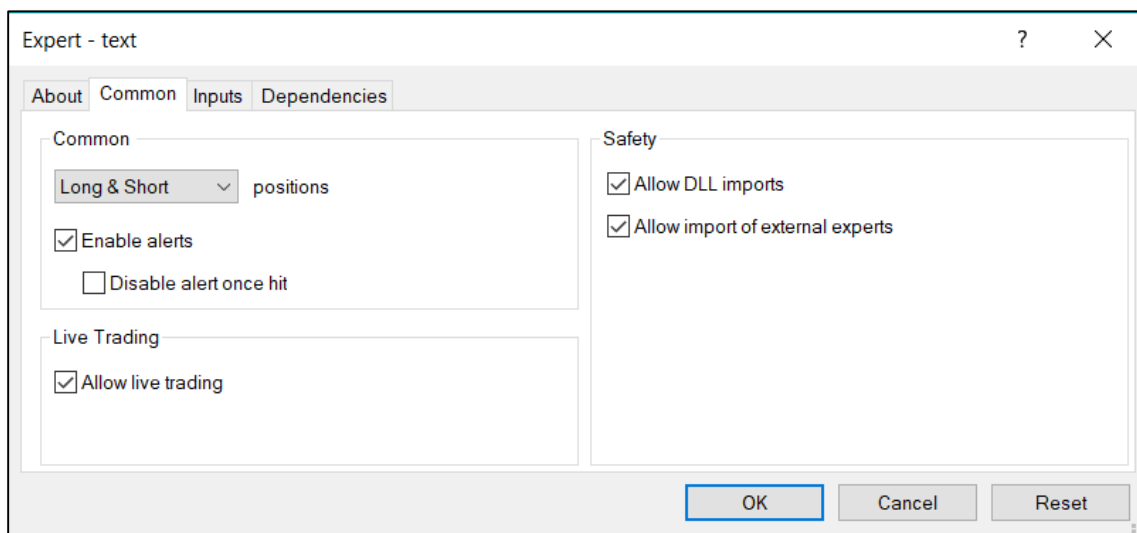


Click [View] from the menu at the top of MT4, then select [Market Watch] from the displayed items.

② Apply EA to the chart.



Please click on the EA from the Navigator window, then drag-drop to apply the EA to the chart. After applying, the following window will be opened.



Put the checks as the image shown above and click [OK] button.

* Notes in using MT4

When using EA, it is necessary to activate PC and MT4 during trading hours.

Please consider MT4 (EA) trading as Auto trading on your behalf.

If MT4 is not operated due to natural disaster such as a lightning strike or a PC malfunction, we will not sell or buy.

Please be well noted.

If you have any questions, please feel free to contact us at any time.

Gemforex support: en@gemforex.com